



SN50S4-ST

Air Stapler BCS4 Series



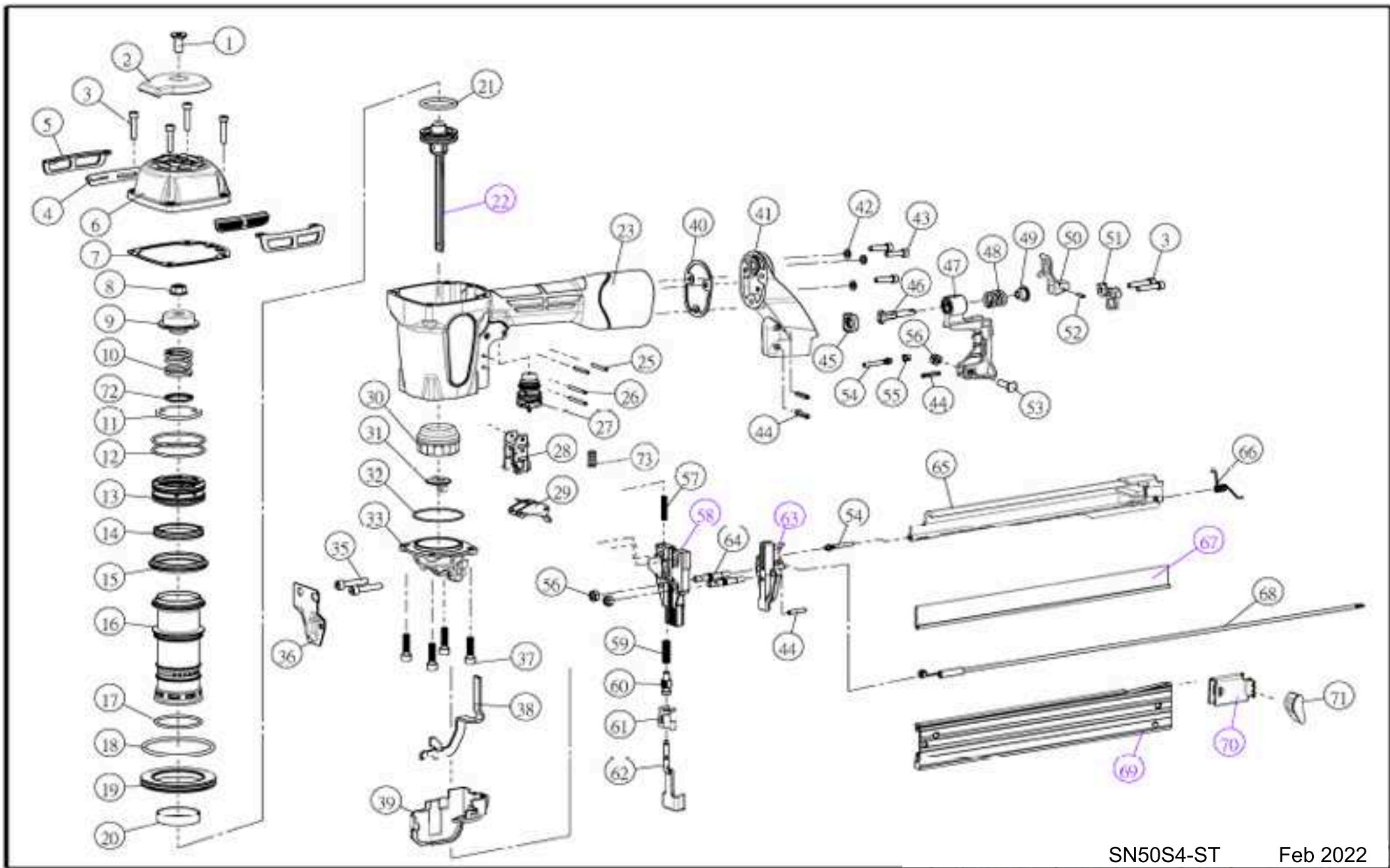
OPERATING & MAINTENANCE MANUAL



WARNING

BEFORE USING THIS TOOL, STUDY THIS MANUAL TO ENSURE SAFETY WARNING AND INSTRUCTIONS.

KEEP THESE INSTRUCTIONS WITH THE TOOL FOR FUTURE REFERENCE.



SN50S4-ST

Feb 2022

SN50S4-ST AIR STAPLER PARTS LIST

Item	Part No.	Description	Qty	Item	Part No.	Description	Qty
1	100930	SCREW M8	1	48	100975	SPRING, LATCH LEVER	1
2	100931	DEFLECTOR	1	49	100976	BUSHING, SPRING	1
3	100933	SCREW M5 x 25	6	50	100977	TOGGLE, MAGAZINE	1
4	100927	RUBBER PROTECTOR	2	51	100984	MAGAZINE STOP	1
5	100953	PROTECTOR	2	52	100090	SPRING PIN 3 x 12	1
6	101875	CAP CYLINDER UNIT	1	53	100983	BOLT, SQUARE	1
7	100952	SEAL CYLINDER CAP	1	54	100981	PIN, MAGAZINE COVER	2
8	100936	NUT M8	1	55	101011	BEARING, COVER PIN	1
9	100937	BUMPER, TOP	1	56	101018	NUT M6	3
10	100938	SPRING, HEAD VALVE	1	57	100985	SPRING	1
11	100940	O-RING	1	58	105021	NOSE	1
12	100941	O-RING	2	59	100989	SPRING	1
13	100939	VALVE, HEAD	1	60	100990	NUT , ADJUSTING	1
14	100943	SEAL CYLINDER	1	61	100991	ADAPTER	1
15	100942	RETAINER CYLINDER SLEEVE	1	62	100992	ARM, LOWER CONTACT	1
16	100945	CYLINDER	1	63	105020	CORE TIP	1
17	100944	O-RING	1	64	100994	PIN, NOSE	2
18	100947	O-RING	1	65	100998	MAGAZINE COVER	1
19	100946	RING CYLINDER SLEEVE	1	66	100999	SPRING	1
20	100948	SEAL CHECK	1	67	105017	COVER, CORE	1
21	101910	O-RING	1	68	101001	SPRING, PUSHER ASSY	1
22	103061	MAIN PISTON UNIT	1	69	105014	CORE ASSEMBLY	1
23	101874	FRAME, OVERMOULD	1	70	105018	PUSHER	1
25	100174	SPRING PIN	2	71	101003	HANDLE, PUSHER	1
26	100966	SPRING PIN	2	72	100963	SPRING WASHER	1
27	100450	TRIGGER VALVE UNIT (ST)	1	73	100389	SPRING	1
28	103295	UPPER TRIP GUIDE ASSY	1	Minimum order quantities for items in the following categories is 10 pieces, order quantities under 10 pieces for these items will be adjusted accordingly.			
29	100386	TRIGGER UNIT (ST)	1				
30	100958	BUMPER - BOTTOM (Y)	1	1	O-Rings - not included in the O-ring kits		
31	105023	DRIVER GUIDE	1	2	Screws, bolts		
32	100643	O-RING	1	3	Pins - roll pin, solid pins		
33	100961	FRAME BOTTOM	1	4	Standard washers - not special washers		
35	100127	SCREW M6	2	5	Nuts		
36	100988	COVER, CONTACT ARM	1				
37	103168	SCREW M6	4				
38	100964	ARM, UPPER CONTACT ASSY	1				
39	100965	COVER, CONTACT ARM ASSY	1				
40	100968	SEAL, END CAP	1				
41	101876	CAP, FRAME END	1				
42	100638	WASHER	3				
43	100530	SCREW M5 x 20	3				
44	100978	SPRING PIN 4 x 20	4				
45	100980	DISC, LATCH STOP	1				
46	100982	PIN, LATCH	1				
47	100973	CAP, MAGAZINE END	1				Feb-22

QUICK JAM-RELEASING MAGAZINE

The stapler contains a "Quick Jam-Releasing Magazine" feature. The magazine is spring loaded to reduce jamming. When a jam does occur, a quick release mechanism at the rear of the magazine allows the magazine to move back, in order to clear the jam.

ALWAYS DISCONNECT AIR SUPPLY BEFORE CLEARING A JAMMED FASTENER.

WARNING:

If a jam does occur, locate the latch at the rear of magazine (FIG. 1). Pull down on the latch to open (FIG. 2), and rotate it clockwise 1/4 turn (FIG. 3). Pull back on the latch (FIG. 4). This will pull the magazine back to clear the jam. After removing the jammed fastener, push on the latch, rotate it 1/4 turn counterclockwise and push up to close.



FIG. 1

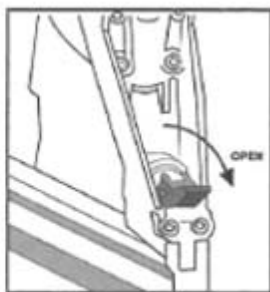


FIG. 2



FIG. 3

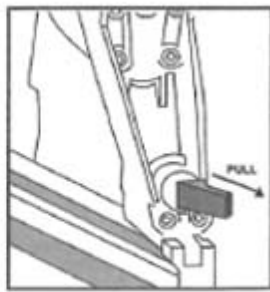


FIG. 4

“DEPTH OF DRIVE ADJUSTMENT”

The “DEPTH OF DRIVE ADJUSTMENT” feature provides close control of the fastener drive depth; from flush with the work surface to shallow or deep countersink. First, set the air pressure for consistent drive in the specific work as described above, then use the “DEPTH OF DRIVE ADJUSTMENT” to give the desired depth of drive.

TO ADJUST “DEPTH OF DRIVE ADJUSTMENT”:

1. With air pressure set, drive a few fasteners into a representative material sample to determine if adjustment is necessary.
2. If adjustment is required, disconnect air supply.
3. Refer to label on the outside of door for direction to turn adjusting nut. (See illustration)
4. Remove cover mounting nuts, cover and adapter. Observe the orientation of the flats on the adjusting nut. Rotate the adjusting nut to the left to increase fastener drive depth, or to the right to decrease it. Reorient the flats to be same as before. Reinstall adapter, cover and mounting nuts.
5. Before reconnecting air supply, check that trip mechanism parts operate freely with no binding or sticking.
6. Reconnect air supply.

